



Recycling and Disposal Done Right

CONTACT US WITH QUESTIONS

www.kimblecompanies.com | **LIVE CHAT AVAILABLE!**

1-800-201-0005 | P.O Box 448 Dover, Ohio 44622

PAPER & NEWSPAPER

Paper should be clean and dry. Please no glossy paper or foil wrapping paper. Paper should not be stained by waste. Magazines, mail, newspapers and copier paper are accepted.

CARDBOARD

Cardboard must be clean and dry. It should be flattened and be emptied of any packing materials. No food contamination such as grease on pizza boxes.

METAL AND ALUMINUM CANS

Only metal or aluminum food and drink cans are accepted. They should be empty, clean and dry before being placed loosely in the recycling cart. No other metal items are accepted.

GLASS BOTTLES

All glass bottles should be empty, clean and dry before being placed loosely in the recycling cart. Please no glassware, mirrors, window panes or light bulbs.

PLASTICS JUGS & BOTTLES

Only clean and empty plastic bottles and jugs are accepted. Please do not crush the bottles and keep lids on. No other plastic items are accepted - even if they have a recycle logo.



NOT ACCEPTED

- PAINT CANS
- ANTI-FREEZE
- WAX CARTONS
- BATTERIES
- LIGHT BULBS
- TOYS
- HOSES
- WOOD
- STYROFOAM
- WIRE HANGERS
- YARD WASTE
- CHRISTMAS LIGHTS
- MOTOR OIL CONTAINERS
- PLASTIC UTENSILS
- PLASTIC FURNITURE



NO PLASTIC BAGS



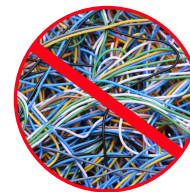
NO GARBAGE



NO FOOD OR LIQUIDS



NO CLOTHING



NO HOSES/WIRES/CHAINS



NO ELECTRONICS



- 1 When in doubt... THROW IT OUT!**
Make sure that all items are on the Kimble Recycling Center's approved list of accepted recyclables. If the item is not on the list or if you are unsure, place it directly into the trash.
- 2 Recyclables must be clean and dry.**
Food and liquid are contaminants. No dirty peanut butter jars or bottles with water still in them. Cardboard must also be clean and dry. Greasy pizza boxes are not recyclable.
- 3 No need to sort or bag your items.**
Place your approved recyclables in your Kimble Recycling Cart all together. Items should be loose and unbagged. Plastic bags one of the largest contaminants at our Recycling Center.